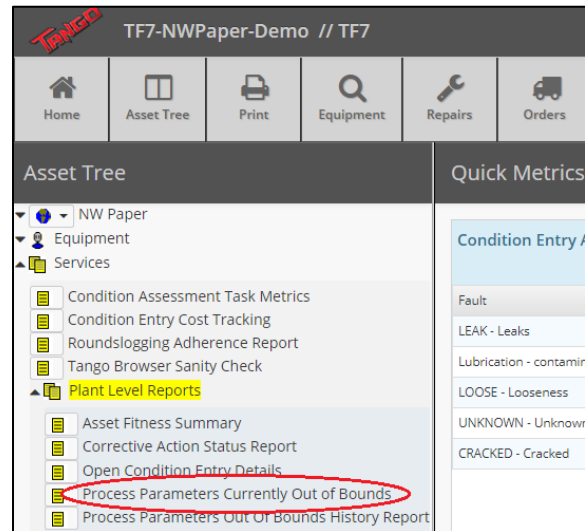


## RoundsLogging Process Parameters Currently Out of Bounds Report

The RoundsLogging 'Process Parameters Currently Out of Bounds Report' pinpoints potential problems found across multiple RoundsLogging inspection routes, helping make maintenance decision making more efficient compared to reviewing individual route report data.

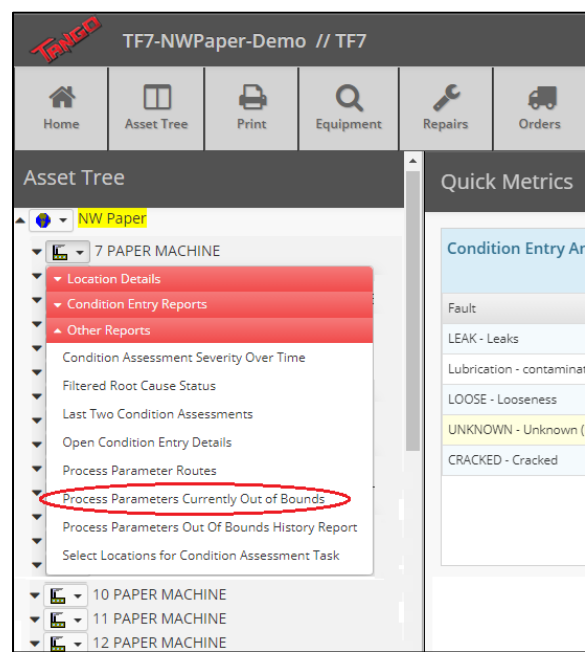
This report can be run from the 'Services, Plant Level Reports' section at the left side of the Tango main screen to provide information on all functional locations in the database. The report will list RoundsLogging Process Parameter measurement points from completed routes where the last measurement represents a potential reliability issue – i.e. 'Alarms' from trend points and 'Out of Bounds' for observation points. Each report row will contain the following information for each measurement point:

- Route on which the point was measured
- Full location hierarchy for the point
- Process Parameter point definition
- Measurement value & date
- Condition Entry status
- Condition Entry Request comments



Running the report from 'Services, Plant Level Reports' will query the entire database and can take several minutes to compile. If you want to focus on a specific area of the plant you can go to any Unit, Function, or Asset level of the location tree, right click the icon a left side of that level, and then go to 'Other Reports' to select this report. The report for the selected location will be returned in a shorter amount of time.

NOTE: Tango RoundsLogging can also be used to add routing and Smart Device field collection capability for Condition Assessment Tasks such as those for IR Thermography or Ultrasonic scans. The data collected for those tasks is different from Process Parameter Routes and is reported in the 'Services, Condition Assessment Services' section at left side of the Tango main screen.



Process Parameters Currently Out of Bounds									
Filter: <input type="text"/>									
Task	Unit	Function	Asset	Comp	Parameter	Value	Timestamp	Condition Entry	Condition Entry Request Comment
Lube-5PM-4th Quarter Motors-Anytime	5 PAPER MACHINE	419-FACILITIES AND UTILITIES -MOTOR COOLING	410605-PRESS COUCH AND WTR MOTOR COOLING FAN	41060505 MOTOR. FOR FAN MOTOR COOLING 1ST PRESS WCR	General Comments	637 Problem Found - Monitor	Oct 18, 2020	Add	watch for uneven blade buildup
Lube-7PM Shutdown 6 Gearbox/Pump Oil Changes	7 PAPER MACHINE	430-STOCK PREP-STOCK SUPPLY PUMPS	240250-#13 LO-D STOCK PUMP TO PM7	24025003 PUMP, Stock, #13 Lo-D to #7PM	Inspect Level Indicator Condition	33 Valve to Sight Glass Closed	Oct 08, 2020	Add	Valve stuck closed
Lube-7PM Shutdown 6 Gearbox/Pump Oil Changes	7 PAPER MACHINE	430-STOCK PREP-STOCK SUPPLY PUMPS	242500-#3 CHEST PS PUMP TO PM7	24250003 PUMP, Stock, #3 Chest, PS to #7PM	Inspect Level Indicator Condition	31 Vent Hole Plugged	Oct 08, 2020	Add	fixed problem, needs shield
Lube-7PM Shutdown 6 Gearbox/Pump Oil Changes	7 PAPER MACHINE	430-STOCK PREP-REFINER CHEST	360300-#5 REFINER CHEST FROM 9 PM	34041011 GEARBOX, For Agitator, #5 Refiner Chest	General Comments	14 Yes	Oct 08, 2020	View	base cracked
Lube-7PM Shutdown 6 Gearbox/Pump Oil Changes	7 PAPER MACHINE	430-STOCK PREP-STARCH SYSTEM	430234-STARCH MIXING	42600511 GEARBOX, For Agitator, Slurry Mixing Tank	Check Oil Condition	10 Add Comment	Oct 08, 2020	Add	foamy
Lube-5PM-4th Quarter Motors-Anytime	5 PAPER MACHINE	410-STOCK PREP - SAVEALL DRUM	322700-SAVEALL DRUM ASSEMBLY	32271005 MOTOR, FOR SAVEALL DRUM	General Comments	14 Yes	Oct 01, 2020	Add	loose base bolts
Lube-5PM-4th Quarter Motors-Anytime	5 PAPER MACHINE	410-STOCK PREP - ADDITIVE TANKS	416105-COLOR PUMP NORTH	41610505 MOTOR, FOR PUMP COLOR NORTH RED	General Comments	636 Problem Found - Corrected	Oct 01, 2020	Add	fixed problem - replaced bad fitting
Lube-12PM Shutdown 3 Gearbox/Pump Oil Changes	12 PAPER MACHINE	490-STOCK PREP-MACHINE CHESTS	495100-MACHINE CHEST	49510111 GEARBOX,For Machine Chest Agitator	Check Oil Condition	9 Dark / Discolored	Jun 18, 2020	Add	Dark, thick

To Excel

This report only includes tasks which have been completed. Any data collected from routes in progress are not reflected in this report.

Once the report is displayed additional Fast Filtering is available by typing into the Filter field at top right. This is a browser type search where the filtering will be applied after you enter each letter or number. In the example shown above you could quickly enter '5' to see only the '5 Paper Machine' items, or 'jun' to see only the older items with a June timestamp.

When a decision is made to escalate a listed problem to the Tango Integrated Condition Status Report (ISCR) the user can click the **Add** button to open the 'Condition Entry' creation page. This allows the user to quickly document findings, comments, problem severity, and recommended actions along with linking any applicable documents or images. When the Condition Entry is completed and saved the information is immediately posted to the Integrated Condition Status Report.

If the severity level meets the defined 'Acute' level (set by the Tango dB administrator) emails will also be **Add** sent to designated **View** users to notify them of the reported issue. When a new Condition Entry is completed from the 'Currently Out of Bounds Report' the button changes to **View**; this notifies users that the issue has been escalated to the ISCR and allows them to re-open the Condition Entry to view or edit details.